

# LAMOILLE FAMILY CENTER FY'18 ANNUAL REPORT



Lamoille Family  
Center

*Encouraging, Educating and Celebrating Families*

To the Lamoille Family Center family: Board, Staff and Friends,

As I write this, it is only a few days' shy of my one-year anniversary as Executive Director here at the Lamoille Family Center. It has been a whirlwind of meetings and decisions and report-writing and more meetings and negotiating with government officials and not-frequent-enough visits with the babies in childcare. I've learned how valuable my predecessor, Scott Johnson's leadership was to this organization and how much juggling it takes just to keep the doors open. I've also learned to appreciate once more the history of the Family Center and of the contributions made by past leaders, from founding Director Olea (then) Landi to Linda Johnson to Linda Martin and Dave Connor as well as Scott Johnson, not to mention all the volunteers, board members and generous contributors who molded the Family Center into the vibrant and vital organization that it is today.

People have asked what's been learned in my first year. The response that comes immediately to mind is that here at the Family Center we meet every day with people facing daunting challenges. Our participants contend with poverty – sometimes extreme poverty -- homelessness, addiction, hunger, child development challenges, discouragement about education, domestic violence, joblessness and adverse childhood experiences echoing in their lives many years later.

The most important takeaway from this first year, however, is not daily reminders about those profound challenges, but the daily reminders that these participants – with a little support from the Family Center – find ways not just to survive, but to thrive. We are privileged to get glimpses of the sustaining power and resilience of the human spirit every day. We see this not just in our participants, but in our Family Center staff as well. It is one of the great honors of my life to work with the people who labor every day to provide support to our participants. Each and every member of our staff has a deep commitment to the people they work with, partnering with them whether to face down a challenge or celebrate success.

Inside this report you will see evidence of our effectiveness. Children's Integrated Services, among many other things, visited participant homes nearly 4,000 times this year. Parent Education and Playgroups served 177 children and more than 200 families. Reach Up case management and job coaching served 63 participants while our LINK program worked with 40 homeless or runaway youth. Child Care Supports continued their good work with child care providers from Stowe to Stannard. LFC's Child Care welcomed a new Director and our busy front desk and the business office managed 38 grants and funding sources that operate in three different fiscal years.

The successes of Family Center participants would be impossible without the support of our communities, Board of Directors, dedicated donors and volunteers who step up on their behalf. Thanks to each of you for continuing to sustain our work.

Warm regards,



Floyd Nease, Executive Director

#### **FY'18 Board Members**

Neal Fisher, Chair  
Marilyn May, Vice-Chair  
Cajsa Schumacher, Treasurer  
Brenda Christie, Secretary  
John Duffy  
Kerrie Johnson  
Sandy Paquette  
Eileen Paus

#### **FY'18 Staff**

Debbie Alexander  
Kathy Beery  
Jessica Bickford  
Teresa Bickings  
Barbara Blanchard-Lewis  
Deanne Blueter  
Sheri Boutin  
Dean Burnell  
Amanda Brochu  
Daniela Caserta  
Jennifer Chittick  
Wendy Chauvin  
Rebecca Condon  
Veronica Cote  
Sheena Davey  
Sarah Doty  
Anne Farley  
Shoshana Frieden  
Samantha Gorton  
Denise Greene  
Christopher Hinds  
John Holland  
Jeffrey Hunsberger  
Scott Johnson  
Denise Krause  
Carol Lang-Godin  
Cecile Languerand  
Christie Leone  
Alison Link  
Heather Machia  
Carol Maloney  
Jodi Martin  
Cathryn Mayo  
Angela Mendieta  
Karen Miller  
Barbara Nash  
Floyd Nease  
Kerri O'Halloran  
Nancy Pope  
Jackie Stanton  
Barb Strong  
Michele Sullivan-DuBois  
Charlie Teske  
Edward Thorndike  
Vanessa Tourangeau  
Debbie Trombly  
Chrissy Wade  
Jessica Wheelock  
Rachel White  
Janel Wortham  
Marilyn Zophar



Lamoille Family Center is committed to building strong families and proactively address social determinants of health to promote healthy development.

Three years ago the Family Center became the only rural site for DULCE, which stands for Developmental Understanding and Legal Collaborations for Everyone. DULCE is a national program that supports families by embedding a Family Specialist to the infant's primary care visits (in Lamoille Valley the Specialist is embedded at Applesseed Pediatrics) for the first six months of their life.

#### Core Elements of DULCE

- **Universal Access:** All newborns at Applesseed Pediatrics are offered DULCE services
- **Family Specialist:** A Lamoille Family Center employee is part of the primary care team. She meets with and is available for all families of infants, birth to six months
- **Medical-Legal Partnership:** A Vermont Legal Aid lawyer advises and supports the Family Specialist and the team
- **Parents as Partners:** A parent representative is a member of the quality improvement team
- **Community Connections:** DULCE is part of the Children's Integrated Services system to provide ongoing support as needed

DULCE's indicators are very positive. 99% of local families agree to participate, with approximately 330 families having been served to date. Our local data collection tells us that families are pleased with, and benefitting from the service including: 90% of well child visits are with the Family Specialist present; families are screened for Intimate Partner Violence, Maternal Depression, and concrete supports (income, utility, transportation, food insecurity, housing insecurity, housing safety). The goal is to insure that 90% of parents with positive screens, who are eligible for and want support, are connected with the appropriate resource.

*"The DULCE team helped my family prevent issues – especially potential social and legal issues – before they became a problem. "*

*- Participant Parent*

#### HOW MUCH DID WE DO?

- The Children's Integrated Services program provided **3,869 home visits to children, families and childcare providers.**
- The Holiday Project provided toys, games, puzzles, stocking stuffers, mittens, hats and books to **337 children representing 161 families**
- The Outreach program provided emergency assistance with rent, fuel, utilities, food, gas, diapers, and clothing to **213 families, reaching 519 children and 315 adults**
- **32** child care programs received training and support to serve **105,116 healthy meals and snacks to 421 children**
- **611 families received financial assistance** to help offset the high cost of child care
- **40 youth** were served through the Youth and Young Adult program
- **64 kids** went to summer camps on scholarship through our Send a Kid to Camp program

#### HOW WELL DID WE DO IT?

- **100% of survey respondents** rated playgroups as "excellent" or "good"
- **99% of Child Care Financial Assistance Program** applications were processed within the required timeframe
- **Families served by the Family Center** rated their experience with an average of 4.5/5
- The LFC licensed child care center **maintained 5 STARS**, the highest possible quality rating

#### IS ANYONE BETTER OFF?

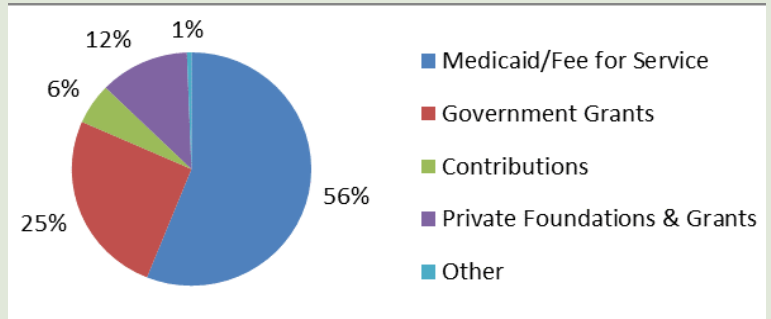
- Playgroup participants responded that their child has benefited and made progress since joining playgroup: **Social/Emotional development (81%), Communication (69%), Cognitive development (63%)**
- **85% of Reach Up participants** are actively engaged in jobs skills training and pre-employment experiences
- More families have access to quality care and a higher rate of State financial assistance, with **84% of Lamoille Valley early care and education programs participating in STARS**
- **88% of youth** exiting our LINK program report a connection to one or more caring adults.



## FY'18 Revenues and Expenditures

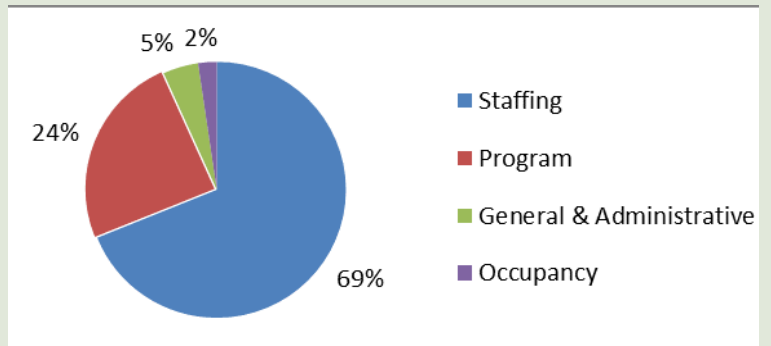
### Revenue

|                              |                    |
|------------------------------|--------------------|
| Medicaid/Fee for Service     | \$1,202,759        |
| Government Grants            | \$547,959          |
| Contributions                | \$121,453          |
| Private Foundations & Grants | \$259,732          |
| Other                        | \$13,082           |
| <b>TOTAL REVENUE</b>         | <b>\$2,144,985</b> |



### Expenses

|                          |                    |
|--------------------------|--------------------|
| Staffing                 | \$1,368,076        |
| Program                  | \$483,474          |
| General & Administrative | \$88,080           |
| Occupancy                | \$46,268           |
| <b>TOTAL EXPENSES</b>    | <b>\$1,985,898</b> |



**NET INCOME \$159,087**



The Lamoille Family Center remained fiscally strong in FY'18, and our Auditors, JMM & Associates, reported no material weaknesses or significant deficiencies. We remain fiscally conservative and attentive to our primary mission and staff in order to maintain critical services for young children, youth and their families. Due to several factors, including vacancy savings, one-time awards, including the Turrell Fund's 2018 S. Whitney Landon Award, and a successful annual appeal, net earnings were strong and enabled us to add to our future reserves.

### THANK YOU...

Community support is critical to the sustainability of the Lamoille Family Center. Thank you to the numerous individual, business, foundation and State and Federal supporters that made it possible for us to reach more than 4000 children, youth, parents and caregivers in FY'18. We cannot do this work without you!

Contributions can be made at <http://www.lamoillefamilycenter.org/donate/> or sent to 480 Cady's Falls Road Morrisville, VT 05661.



[www.lamoillefamilycenter.org](http://www.lamoillefamilycenter.org)  
 480 Cady's Falls Road Morrisville, VT 05661  
 Ph - (802) 888-5229 Fax - (802) 888-5392