



2019 Annual Report



Lamoille Family
Center

Encouraging, Educating and Celebrating Families

FROM FLOYD



Dear Friends,

As I look back on my first full year at the Lamoille Family Center, it doesn't seem possible. It still feels like I have a lot to learn. But what a place to spend a work day!

Every day I get to hear from staff about the families they serve, stories that are sometimes tragic and often triumphant. Every day brings new appreciation of the commitment, compassion and effectiveness of LFC's terrific professional staff. Every day brings new opportunities to partner with other providers in order to better serve those who participate in our programs. Every day brings reminders of the resilience that humans can display, even in the face of profound adversity. Your Lamoille Family Center is serving more families than ever before, working with more community partners and expanding programs.

This last year, LFC's staff and Board prepared for a strategic planning process by rewriting LFC's vision and mission statements and agreeing on core values. Staff discusses how our core values impact the work we do and influence our culture at nearly every staff meeting. Imagine the privilege of sitting with LFC staff to discuss how just one of our core values -compassion - influences how we work with participants and with one another. These are wonderful and moving conversations.

There is much more to tell and so little space to tell it in. If you want to know more, let's have a cup of coffee. I'd be happy to spend some time singing the praises of LFC, her participants and her staff.

Sincerely,

Floyd Coase

Vision

The Lamoille Valley will be a safe and secure community where children, youth, and families are empowered, cared for and valued.

Mission

The Lamoille Family Center is a nonprofit organization that promotes the well-being of Lamoille Valley children, youth and families and supports them in meeting life's challenges through education, direct services and advocacy.

COMMITMENT



CORE VALUES

As an organization, we are committed to collectively integrating these values into our workplace culture, our interactions with clients and families, and our collaborative relationships with community partners.

COMPASSION

We welcome all, we meet people where they are at, and act with empathy and sensitivity.



INCLUSIVITY

We honor all people and recognize their unique perspectives, contributions, and experiences.

INTEGRITY

We act with fairness, honesty, transparency, and accountability.

RESPECT

We treat our clients, partners, and ourselves with mutual respect and sensitivity.

COLLABORATION

We work as a team and build on each other's strengths, both within our organization and with community partners.

POSITIVITY

We approach our work with the confidence that a constructive, optimistic approach makes a difference.

Congratulations to Carol Lang-Godin, Early Childhood Programs Manager, who received the Scott Johnson Leadership Award at our Annual Meeting



FY'19 Board Members: Neal Fisher, Chair; Marilyn May, Vice-Chair; Cajsa Schumacher, Treasurer; Brenda Christie, Secretary; John Duffy; Kerrie Johnson; Adam Lory; Sandy Paquette; Eileen Paus

FY'19 Staff: Alissa Barracks*, Kathy Beery, Jessica Bickford, Teresa Bickings, Autumn Blueter, Deanne Blueter, Sheri Boutin, Dean Burnell, Jennifer Chittick, Wendy Chauvin, Rebecca Condon, Veronica Cote, Em Delaney*, Sarah Doty, Anne Farley, Jen Foehr-Mckenzie*, Shoshana Frieden, Samantha Gorton, Trudy Griggs, John Holland, Jeffrey Hunsberger, Scott Johnson, Hiata Kirby, Carol Lang-Godin, Cecile Languerand, Celine LeBlanc*, Alison Link, Finley Losch*, Carol Maloney, Jodi Martin, Cathryn Mayo, Angela Mendieta, Karen Miller, Barbara Nash, Floyd Nease, Kerri O'Halloran, Halaina Patoine, Julia Skonicki*, Jackie Stanton, Barb Strong, Michele Sullivan-DuBois, Vanessa Tourangeau, Debbie Trombly, Chrissy Wade, Jessica Wheelock, Rachel White, Janel Wortham, Marilyn Zophar

*Joined LFC in FY19 - Welcome to the LFC Family!

HOW MUCH DID WE DO?

3800

Home visits
provided by
Children's Integrated
Services



18

Babies
attended our 100%
subsidized
Child Care



1042

Books given away at
Morrisville's 4th of
July Parade



15

Families' wishlists
fulfilled during
Adopt a Family



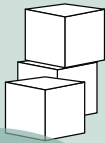
84

Summer Camp
Scholarships



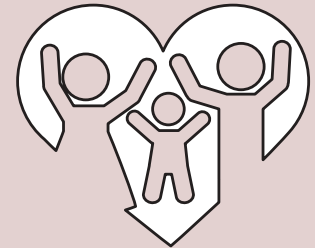
555

Families received
Child Care Financial
Assistance



378 adults

539 children
Received Emergency
Resources



104 adults

142 children
Attended
Playgroups



72

Families visited to
welcome their new
babies



325

Kids received loads
of gifts through the
Holiday Project



94

Families with
newborns served
through DULCE



55

Youth in Crisis
served



HOW WELL DID WE DO IT?

100%

of CIS program participants had services start within the required timeframe.

100%

of our most recent survey respondents rated Hometown Playgroups as "excellent" or "good."

99%

of Child Care Financial Assistance Program applications were processed within the required timeframe.

90%

of DULCE well-child visits include a Family Specialist present.

IS ANYONE BETTER OFF?

96%

of DULCE respondents reported being able to better understand and meet their child's needs.

100%

of Playgroup parents said that their child made progress in social-emotional development after attending playgroups.

94%

of Playgroup parents said that they learned from other parents while at playgroup.

93%

of youth served reported a connection to one or more unpaid caring adult.

100%

of families served by CIS achieved one or more outcome goals.

SUCCESSSES

CHILDREN'S INTEGRATED SERVICES

A local mom of 3 kids began working with the Children's Integrated Services team in 2017. The team helped her remove her family from an abusive living situation. They connected her child with CIS-Early Intervention services for her youngest, CIS-Specialized Childcare services, and CIS-Early Childhood and Family Mental Health services. A year later, mom enrolled in college and is now working part-time with the goal of becoming a Family Support worker so that she can help other parents.



YOUTH AND YOUNG ADULT PROGRAM

A 14 year old young man began working with the PSSYF/ LINK program during our summer program in 2019. Staff supported him with channeling his energy for outdoor activities safely, worked with him to manage his anger, frustration and patience and stabilized his energy in school. We partnered with his family, school and counselor to help him begin to make new and positive friends, make responsible decisions regarding his love for mountain biking, decrease his high risk behaviors, and focus his attention on doing his best at school. He continues to work with us and is becoming a more empathetic and happier student and young man.

KIDS TO CAMP

Kid to Camp offered 84 Scholarships this year! Many parents, service providers, camp directors, and campers wrote to LFC in appreciation for the opportunity to build resilience and friendships. One parent wrote, "This is our first year attending camp and we cannot be more thankful for the opportunity to get kids outside and moving this summer. If it wasn't for the scholarship I don't believe my son would have been able to have this opportunity and for that we are grateful."

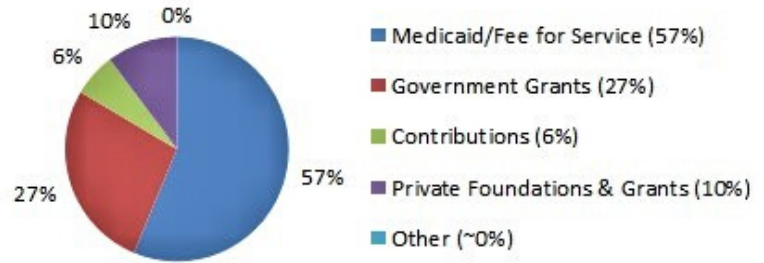


FINANCIAL REPORT

FY2019 Operating Revenue and Expenditures

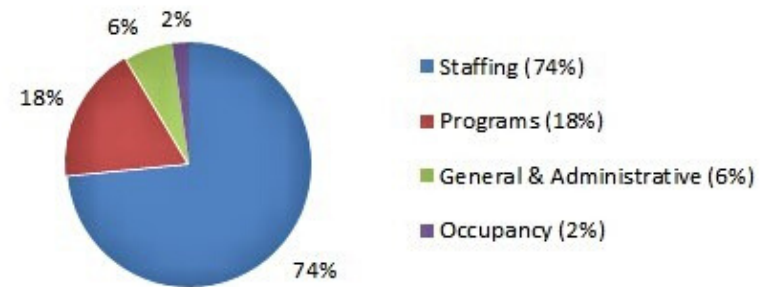
Revenue

Medicaid/Fee for Service (57%)	\$1,144,405
Government Grants (27%)	\$552,284
Contributions (6%)	\$126,887
Private Foundations & Grants (10%)	\$208,839
Other (~0%)	\$142
TOTAL REVENUE	\$2,032,557



Expenses

Staffing (74%)	\$1,425,500
Programs (18%)	\$349,011
General & Administrative (6%)	\$122,575
Occupancy (2%)	\$44,102
TOTAL EXPENSES	\$1,941,188



NET INCOME

\$91,369

The Lamoille Family Center remained fiscally strong in FY'19, and our Auditors, JMM & Associates, reported no material weaknesses or significant deficiencies. We remain fiscally conservative and attentive to our primary mission and staff in order to maintain critical services for young children, youth and their families. Due to several factors, including vacancy savings, a bequest, and a successful annual appeal, net earnings were strong and enabled us to add to our future reserves, ensuring sustainability for the organization in a time of level-funded and under-funded contracts.



DeAnne Blueter celebrated **20 years** of service to LFC



Cathy Mayo celebrated **5 years** at LFC



Governor Phil Scott visited LFC

THANKS

We are so appreciative of the many partners that make Kid to Camp, Holiday Project, and other programs possible, including but not limited to: Community National Bank; Carlson Real Estate; Donald and Julie Blake; Marckres, Norder & Company Inc.; NA Manosh Corp.; G.W. Tatro Construction Inc.; Stevens Law Office; Country Home Center; Casella Waste System; Pricechopper's Golub Foundation; Lamoille Valley Transportation; North Country Federal Credit Union; Stowe Family Dentistry; Brenda and Peter Christie; Cajsa and Jeffrey Schumacher; Michael Snyder and Kristin Sharpless; Scheerer Family Foundation; Blanchard Family Foundation; Deb Yacavone; Lisa Libraries; Kinney Drugs in Cambridge and Morrisville; Big Lots; Community National Bank; Curves; Fred's Energy; O'Reilly Auto Parts; People's United Bank; Presents of the Past; Union Bank (both Morrisville locations and Johnson); Once Upon A Time; The Swimming Hole; Bear Pond Books; Blessed Sacrament Church in Stowe; Stowe Community Church; Johnson Farm and Garden; Lamoille Valley Chevrolet; North Country Federal Credit Union; Pizza on Main; Thompson's Flour Shop; Fork and Gavel; NAPA Auto Parts; Sargent's Moving; Turning Heads Salon; Hyde Park VFW; Roessner Foundation



GET INVOLVED

Community support is critical to the sustainability of the Lamoille Family Center. You can help by:

- Making a financial contribution
- Becoming a Sustaining Donor
- Including LFC in your Planned Giving
- Contributing goods or services
- Hosting a fundraising event
- Volunteering in one of our programs
- Connecting the Family Center to other individuals, businesses, or foundations who might be interested in supporting our work.

For more information, please call
(802) 888-5229 or go to
www.lamoillefamilycenter.org/donate
Lamoille Family Center
480 Cady's Falls Road
Morrisville, VT 05661

SUPPORTER OF THE YEAR

Special Thanks to Jason Pacioni, owner of Black Diamond Barbeque, and LFC's Supporter of the Year. Jason and his team have given countless hours, donations, and delicious food toward supporting LFC, including organizing three successful fundraising Chef Competitions called the "Golden Fork" to benefit LFC.

