



Lamoille Family
Center

Encouraging, Educating and Celebrating Families

GREETINGS FROM FLOYD

A letter from Floyd Nease, Executive Director



Dear Friends,

It is difficult to fully express just how creatively and effectively your LFC staff responded to our participants' – and their own – radically changed circumstances due to the devastating pandemic. Home visitors pivoted quickly to virtual home visits, which often meant finding technology for the homes they were to visit. Early Interventionists, whose job it is to observe children closely to determine their developmental and learning needs, found ways to do so on laptops and home computers. Staff put together age-appropriate activity bags for families. LFC became the diaper bank for the Lamoille Valley.

Wendy Chauvin, who was awarded the Scott Johnson Leadership Award at the last Annual Meeting, has re-organized the Holiday Project so an anticipated increase in the number of families can be served without putting them, our staff or volunteers at risk. The pandemic has impacted everything at LFC, from how the business office conducts business to how we serve runaway and homeless youth. Often, staff found themselves at personal risk because there was no one else to transport a youth to shelter or deliver diapers or food to an isolated home.

The impact on LFC's bottom line has been consequential. Participation dropped precipitously in both the Youth and Young Adult and Children's Integrated Services programs, while families and youth who were able to participate often require more intense services. Cancelled fundraisers and other challenges also had an impact.

Fortunately for LFC, some of our donors have stepped up to increase their giving. Others, due to personal circumstances, are no longer able to give at all. That makes this year's Annual Appeal a little different. Even in normal years, some donate at sacrificial levels. This year, many can't. **For those who can, we hope that you will consider becoming a sustaining supporter by donating every month.** If you normally give \$100.00 a year, please consider giving \$10.00 a month. That increases your gift while taxing the budget less. Whether you can give this year or not, please know that we appreciate your support always.

We will get through this together.

Sincerely,

Vision

The Lamoille Valley will be a safe and secure community where children, youth, and families are empowered, cared for and valued.

Mission

The Lamoille Family Center is a nonprofit organization that promotes the well-being of Lamoille Valley children, youth and families and supports them in meeting life's challenges through education, direct services and advocacy.

COMMITMENT



Greetings from your Board Chair,

I wanted to take this time to thank all of you who have been loyal supporters of the Lamoille Family Center over the years and to invite those of you who may not know of our work to join us as supporters. I don't need to remind any of you about the trials of the past eight months. You have lived them, just as all of us have.

The Lamoille Family Center staff has been able to pivot to working at home, meeting families from across their lawns, finding times to work in our office when only a few people can be in the building at once, and packing activity bags for children to make sure they continue to develop during these trying times. Despite the challenges, our staff has continued to fulfill our mission. For this incredible group of employees, we are truly grateful.

Our board has continued to meet online and we are waiting for the moment when we are able to meet face-to-face again. However, we are so lucky to live in a state that has set a priority to keep all of us safe during the pandemic. We will continue to follow our governor's guidelines while reaching out to the families we cherish. Your support will make this a continued possibility.

With sincere good wishes,
Marilyn May

Special thanks to Neal Fisher, who served as Board Chair, and John Duffy, long time Board member, who retired from their positions this year. We miss you Neal and Duffy!



Neal, Sandy, Kerrie and Duffy

FY'20 Board Members: Neal Fisher, Chair 7/19 - 10/19; Marilyn May, Vice-Chair 7/19 - 10/19, Interim Board Chair 10/19 - 6/20; Cajsa Schumacher, Treasurer; Brenda Christie, Secretary; John Duffy (7/19-12/19); Kerrie Johnson; Adam Lory; Sandy Paquette; Eileen Paus; Catherine Gallagher; Reeva Murphy

FY'20 Staff: Alissa Barracks, Kathy Beery, Jessica Bickford, Deanne Blueter, John Boyer*, Dean Burnell, Jennifer Chittick, Wendy Chauvin, Kyle Clark*, Aaron Cornelius*, Veronica Cote, Em Delaney, Sarah Doty, Anne Farley, Jen Foehr-Mckenzie, Trudy Griggs, Ashley Hill*, Jeffrey Hunsberger, Carol Lang-Godin, Cecile Languerand, Celine LeBlanc, Alison Link, Jodi Martin, Cathryn Mayo, Angela Mendieta, Floyd Nease, Kerri O'Halloran, Kate Parent, Julia Skonicki, Jackie Stanton, Barb Strong, Debbie Trombly, Jessica Wheelock, Rachel White, Janel Wortham, Jasmine Yuris*

**Joined LFC in FY20*

MAKE A DIFFERENCE

Lamoille Family Center needs your support!

Please consider contributing a SUSTAINING DONATION:

Why become a SUSTAINING DONOR?

- *Help local families now *and* throughout the whole year
- *Set your donation to a budget-friendly amount, rather than making a larger, one-time gift now
- *Ensure LFC receives the stable funding it needs during trying times

DOUBLE YOUR IMPACT!

**The first \$5,000
in new, committed
sustaining
donations will be
matched!**

**HELP US MEET
THIS MATCH!**

"As long time supporters of LFC, we became sustaining members in 2019. It's cost-effective and environmentally friendly. By changing our annual contribution to a monthly withdrawal we have simplified our lives. More importantly, seeing the monthly contribution reminds us of the essential work that LFC continues to provide to families."

- Lamoille Couple

Of course, one-time donations are just as appreciated!

All annual and sustaining donors will be entered for a chance to win a gift certificate to Black Diamond Barbeque!



HOW MUCH DID WE DO?

152 kids
109 adults
Attended
Playgroups

1030 Books to kids



10 Babies provided childcare

301 Kids served through Holiday Project

42 Kids
29 adults
wishlists
fulfilled by
Adopt a
Family



75 Newborn family Welcome Baby visits

545 Child Care Financial Assistance Families

83 DULCE families with newborns

23 Summer Camp Scholarships

801 masks distributed

48 youth served

539 kids
378 adults
Received
Emergency
Resources

828
individuals
directly served by
Healthy Lamoille
Valley

3364
Home or
Virtual Home
Visits
by Children's
Integrated
Services

HOW WELL DID WE DO IT?

100%
of families
accepted DULCE
services during
infant well-child
visits.

99%
of CIS program
participants
had services
start within the
required
timeframe.

99%
of Child Care
Financial Assistance
Program
applications were
processed within the
required timeframe.

94%
of our most recent
survey respondents
rated Hometown
Playgroups as
"excellent" or
"good."

IS ANYONE BETTER OFF?

100%
of youth served
reported a connection
to one or more unpaid
caring adult.

97%
of DULCE respondents
reported being able
to better understand
and meet their child's
needs.

100%
of parents saw
social-emotional
growth since
attending
playgroups.

97%
of Playgroup parents
reported their
knowledge of
effective parenting
increased

2019-2020



HEALTHY LAMOILLE VALLEY

As of July 1, 2019 - Healthy Lamoille Valley officially became a program of Lamoille Family Center. HLV is a community coalition that works with leaders, schools, businesses, towns, families and youth to prevent and reduce underage use of alcohol, binge drinking, and tobacco while increasing prescription drug safety, and marijuana education. To learn more about HLV, visit healthylamoillevalley.org

A Program of the Lamoille Family Center

CHILDREN'S INTEGRATED SERVICES

LFC's Early Interventionist and Family Support Specialist were co-visiting a family of a single father and a 31 month old son twice a month. When in-person visits had to be changed due to COVID-19, staff delivered child-centered activities before each visit and continued to meet every two weeks via tele-health.

During the visits, staff watched dad blossom as he became more engaged with his son, doing the activities together in mutual enjoyment. Staff was able to weave information about development into the natural conversations during activities. Even though dad would prefer and misses in-home visits, he has stated that he is enjoying the twice a month opportunity to meet virtually.



PLAYGROUPS

Sarah had been in trouble with the law and, while awaiting trial, she became pregnant. She quickly went into recovery and although she was separated from her baby after birth, worked hard to get her child back. Her father and her case manager took her to playgroups to rebuild relationships between her and her baby and between her and her community. Without the opportunity for social interaction during playgroups, she would be isolated. She loved being part of playgroup, where she didn't have to be a criminal or an addict - she could just be a mom.

COVID-RESPONSE ACTIVITY BAGS

In response to the need for families to stay home during the pandemic this spring, LFC and HLV partnered with over 14 local organizations to distribute 400 activity bags to kids ages 0-17 in Lamoille Valley. The bags included age-appropriate activities to encourage cognitive, social/emotional and physical development and connected agencies to families.

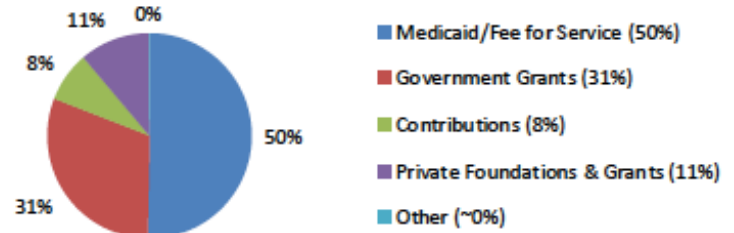


FINANCIAL REPORT

FY2020 Operating Revenue and Expenditures

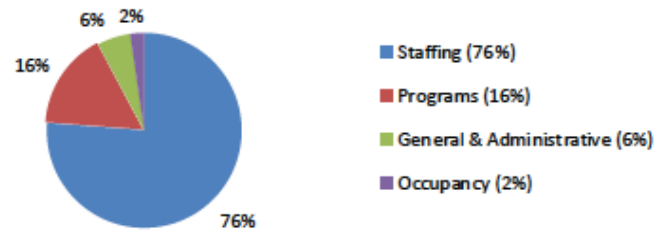
Revenue

Medicaid/Fee for Service (50%)	\$1,079,297
Government Grants (31%)	\$656,456
Contributions (8%)	\$170,298
Private Foundations & Grants (11%)	\$239,462
Other (~0%)	\$196
TOTAL REVENUE	\$2,146,709



Expenses

Staffing (76%)	\$1,463,721
Programs (16%)	\$307,746
General & Administrative (6%)	\$105,665
Occupancy (2%)	\$43,864
TOTAL EXPENSES	\$1,920,996



NET INCOME **\$224,713**

The Lamoille Family Center remained fiscally strong in FY'20, and our Auditors, JMM & Associates, reported no material weaknesses or significant deficiencies. We remain fiscally conservative and attentive to our primary mission and staff in order to maintain critical services for young children, youth and their families. Due to several factors, including vacancy savings, a few generous donations from private donors and foundations, and a successful annual appeal, net earnings were strong and enabled us to add to our future reserves, ensuring sustainability for the organization in time of leveled and unpredictable funding.



THANKS



We are so appreciative of the many partners that make Kid to Camp, Holiday Project, Story Stroll, and other programs possible:



Special Thanks to Thompson's Flour Shop, Fred's Energy, Stowe Mountain Resort, Sargent's Moving, Deb's Place, Riverbend Market and the many businesses that contribute to the well-being of Lamoille Valley. Please support your local businesses just as they support our community!

THANK YOU FOR MAKING AN IMPACT

Community support is critical
to the sustainability
of Lamoille Family Center.

You can help by:

- Making a financial contribution
 - Becoming a Sustaining Donor
- Including LFC in your Planned Giving
 - Contributing goods or services
 - Hosting a fundraising event
- Volunteering in one of our programs
- Connecting the Family Center to other individuals, businesses, or foundations who might be interested in supporting our work.

For more information, please call
(802) 888-5229 or go to www.lamoillefamilycenter.org/donate
Lamoille Family Center
480 Cady's Falls Road
Morrisville, VT 05661

